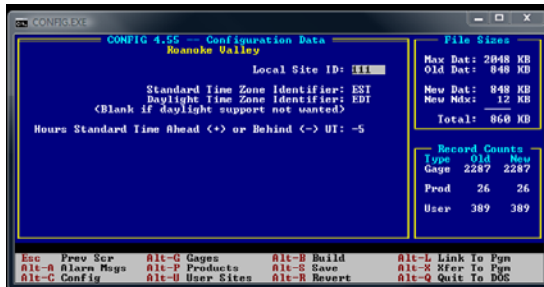


Configuration System Program

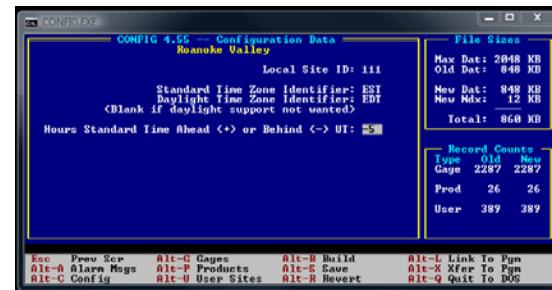
The Configuration System Program allows the user to **1) assign the computer an IFLOWS ID**, **2) set the Universal Time difference** and **3) add gages to the IFLOWS database**. To open the Configuration System Program first, stop IFLOWS. At the bottom of the screen click START, ALL PROGRAMS, IFLOWS. Open CONFIGURATION SYSTEM program. After installing IFLOWS you have to access this program to:

1. Enter Local Site ID number which is your locality ID. This field is highlighted when the program opens.



Press the ENTER key and a list of IDs appear. Scroll to highlight the ID you wish to use for the computer and press the ENTER key.

2. Set IFLOWS program



clock to adjust for Universal Time (UT). This value should always be -5. Use the TAB key to scroll to this field to make changes. After changes to daylight savings in the spring and fall always reboot your IFLOWS computer and then check the UT and make sure it did not change.

Always save using the ALT-S key when you make any changes to the Configuration System program. To quit the program press ALT-Q and restart IFLOWS.



3. Turn on your gages in the IFLOWS database.

Open the gage database by pressing the ALT-G keys (Gages).

Scroll through the gages using the arrow keys or Page ↑↓ keys until you highlight the correct gage. Press the X key. The Rec Size column will change from None to X-Large. To save the change press ALT-S keys (Save). Next rebuild the database by pressing ALT-B keys (Build Database). The gage is now added to the IFLOWS database. Press ALT-Q to close the program. Now restart IFLOWS and add the gage to the IFLOWS modules.



The other components of the Configuration System Program will most likely not need to be changed from the default settings.