



Secretary of Agriculture and Forestry

MISSION STATEMENT

It is the responsibility of Commonwealth Government to provide for the safety and well-being of Commonwealth citizens and ensure the continuity of Commonwealth government operations, including the delivery of essential government services during a disaster. The Commonwealth of Virginia Emergency Operations Plan (COVEOP) assigns specific responsibilities to agencies and offices to ensure the Commonwealth is able to meet this responsibility. Commonwealth agencies and institutions of higher education (IHEs) must be prepared to implement their own agency's emergency plans and execute their duties as assigned in the COVEOP, hazard specific annexes, and support plans. *COVEOP 2021*

INDIVIDUAL SECRETARIAT RESPONSIBILITIES

Each Secretariat is responsible for ensuring their agencies and offices are: (1) meeting their statutory obligations for emergency preparedness, (2) prepared and able to implement their agency continuity plans, and (3) prepared and able to execute the duties assigned to them in the COVEOP and all-hazards annexes.

THE AGRICULTURE and FORESTRY SECRETARIAT

The specialized expertise and equipment within the Department of Forestry is critical to both the Emergency Services and the Infrastructure Support Branch activities within the VEST. The Department of Agriculture and Consumer Services plays a significant role in disaster recovery efforts.



Secretary Matthew Lohr

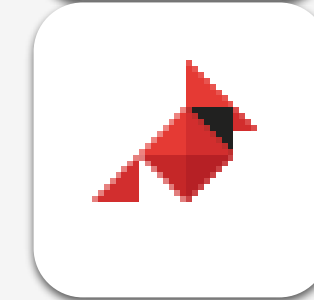
Your Supporting Agencies:



Virginia Department of Agriculture and Consumer Services



Department of Forestry



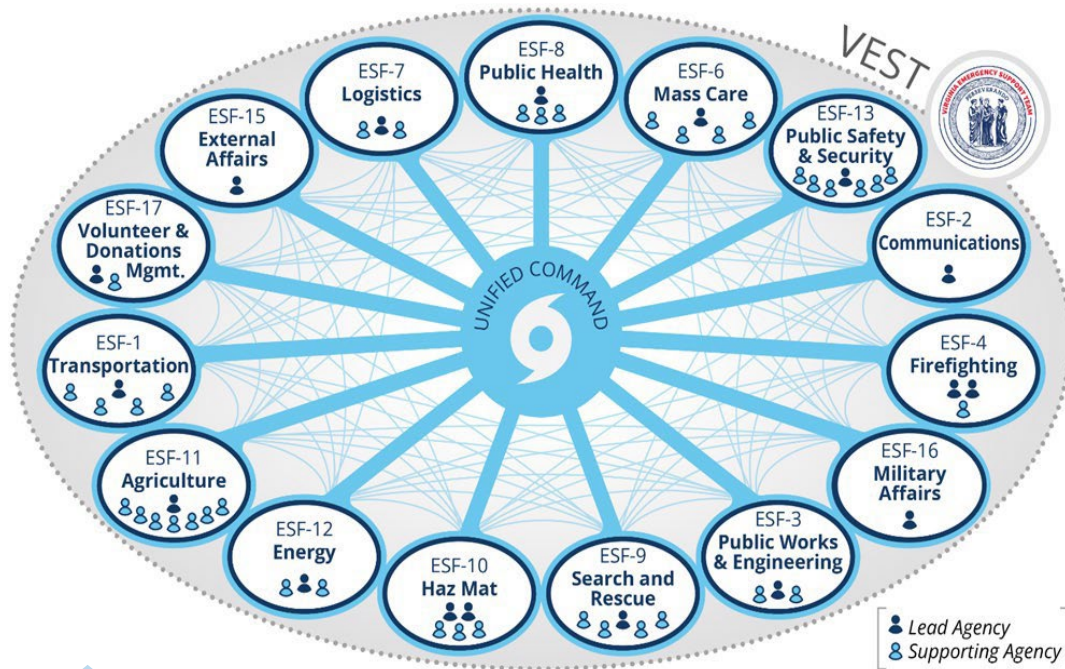
Racing Commission



Secretary of Agriculture and Forestry

THE VIRGINIA EMERGENCY SUPPORT TEAM (VEST)

Comprised of Commonwealth agencies, non-governmental organizations, and private sector companies, the VEST supports all ten Cabinet Secretaries in meeting their statutory emergency management responsibilities. Command and General Staff and 17 Emergency Support Functions (ESFs) are activated through four levels to meet emergency needs, incidents that exceed local capacities, or when incidents span multiple VDEM Regions.



VEST ACTIVATION LEVELS

CONDITION GREEN
Steady State

CONDITION YELLOW
Activated Monitoring

CONDITION ORANGE
Partially Activated

CONDITION RED
Fully Activated

Emergency Support Functions (ESF)

Emergency Support Functions (ESFs) group governmental and certain private sector capabilities into an organizational structure to provide support, resources, program implementation and services that are most likely needed to save lives, protect property and the environment, restore essential services and critical infrastructure, and help victims and communities return to normal following incidents. Each ESF has a Lead Agency and Supporting Agencies that collaborate to execute their responsibilities.

For more information, please go to <https://www.vaemergency.gov/2022-cabinet-exercise/> to review: 1) COVEOP, 2) Secretariat emergency management responsibilities per COVEOP, agency, and emergency support function, 3) Governor's Cabinet emergency management overview, and 4) individual Cabinet Secretary emergency management overview and construct.

Secretary Matthew Lohr

Your Supporting ESFs, their Lead Agencies, and Function:

1	3	4	5	6	8	9	11	13	15
ESF 1 Transportation									
ESF 3 Public Works and Engineering									
ESF 4 Firefighting									
ESF 5 EM/Command and General Staff									
ESF 6 Mass Care									
ESF 8 Public Health									
ESF 9 Special Operations									
ESF 11 Agriculture and Consumer Services									
ESF 13 Public Safety and Security									
ESF 15 External Affairs									



www.vaemergency.gov

twitter.com/VDEM

facebook.com/VAemergency

instagram.com/vaemergency

linkedin.com/company/virginia-department-of-emergency-management/

7.1.4.3 SECRETARY OF AGRICULTURE AND FORESTRY

7.1.4.3.1 Department of Agriculture and Consumer Services (VDACS)

The Department of Agriculture and Consumer Services is assigned the following duties:

- **ESF 5 Emergency Coordination, Information And Planning**
 - Appoint a VEST Liaison Officer and at least one alternate to serve as the primary point of contact for all disaster preparedness, response and recovery matters.
 - Appoint an Emergency Management Coordinator (EMC) and at least one alternate responsible for the development and maintenance of agency-specific emergency plans.
 - Appoint a public information officer to staff the VEST Joint Information Center at the request of VDEM and coordinate emergency public information with VDEM during states of emergency.
 - Support recovery operations as outlined in the COVEOP Statewide Recovery Support Annex.

- **ESF 6 Mass Care, Emergency Assistance, Human Services, and Housing Referral**
 - Provide support as directed and as outlined in the Commonwealth Family Assistance Center plan.
 - Plan for, coordinate and implement pet sheltering as outlined in the Commonwealth of Virginia State Coordinated Regional Shelter Plan.

- Participate in the development and maintenance of the Commonwealth Emergency Feeding Plan and the activation of the State Feeding Task Force as necessary.
- **ESF 8 Public Health and Medical**
 - Coordinate with VDSS regarding pet sheltering for state managed shelters.
 - Ensure safety of food sources regulated by VDACS.
 - Assist Virginia Department of Health with investigation of any outbreak of a highly contagious or economically devastating animal/zoonotic (i.e., transmitted between animals and people) disease pertaining to livestock and poultry.
- **ESF 11 Agriculture and Natural Resources**
 - Locate and allocate bulk food sources as appropriate. Delivery of food will be coordinated through other ESFs.
 - Coordinate a response to an outbreak of highly contagious or economically devastating animal/zoonotic disease, an outbreak of a harmful or economically significant plant pest or disease.
 - Ensure that areas impacted by the disaster are prioritized for food safety inspections and verifications as appropriate.
 - Coordinate protection of endangered species.
 - Coordinate the sheltering of household pets at state shelters.
 - Manage animal waste and wastewater disposal in coordination with technical guidance provided by DEQ and VDH.
- **ESF 15 External Affairs**
 - Coordinate emergency-related public information with the Joint Information Center using the Joint Information System.
 - Provide staff to the Joint Information Center when requested.
 - Public Information Officers will distribute disaster-related information to their partners, the public, and external audience as appropriate.

7.1.4.3.2 Department of Forestry (VDOF)

The Department of Forestry is assigned the following duties:

- **ESF 1 Transportation**
 - Support road clearing operations with chainsaw crews following wind-related storms.
 - Provide snow removal on rural gravel roads.
 - Assist with rescue and recovery of stranded motorists during snow incidents.
- **ESF 3 Public Works and Engineering**
 - Responsible for cutting wood but not for its disposal.
 - Responsible for providing chain saw crews and specialized equipment for the removal of debris from state-managed highways.
 - Provide specialized equipment and resources for the emergency demolition of buildings.

- Provide specialized equipment and resources for the stabilization of dams.
- **ESF 4 Firefighting**
 - Coordinate and perform wildland fire suppression and response statewide.
 - Coordinate and perform forest and forest fire law related enforcement activities statewide, including wildland fire origin and cause investigation and all related criminal and civil actions related to this effort.
 - Develop specialized response resources and crews according to capabilities, including dozer crew, chain saw crew, fire line hand crew, equipment repair, other specialized equipment, transportation, etc.
 - Provide specialized training for wildland fire suppression and advanced incident management as appropriate.
- **ESF 5 Emergency Coordination, Information And Planning**
 - Appoint a VEST Liaison Officer and at least one alternate to serve as the primary point of contact for all disaster preparedness, response and recovery matters.
 - Appoint an Emergency Management Coordinator (EMC) and at least one alternate responsible for the development and maintenance of agency-specific emergency plans.
 - Appoint a public information officer to staff the VEST Joint Information Center at the request of VDEM and coordinate emergency public information with VDEM during states of emergency.
 - Support recovery operations as outlined in the COVEOP Statewide Recovery Support Annex.
- **ESF 9 Special Operations**
 - Provide GIS-based mapping capabilities to support SAR missions.
 - Provide Incident Management Teams to support all-risk incidents throughout the Commonwealth.
- **ESF 11 Agriculture and Natural Resources**
 - Provide incident management personnel to support command and control functions.
 - Provide specialized heavy equipment to support emergency plant and animal disposal operations.
 - Provide protection of forests and streams of the Commonwealth.
- **ESF 13 Public Safety and Security**
 - Provide public safety such as traffic control and criminal investigation and law enforcement officers with statewide jurisdiction along with supporting equipment such as 4-wheel drive vehicles and all-terrain vehicles.
 - Provide agencies aerial survey and reconnaissance to support public safety operations.
 - Provide nationally qualified incident management team personnel to provide command and control functions in support of public safety operations.

- **ESF 15 External Affairs**
 - Coordinate emergency-related public information with the Joint Information Center using the Joint Information System.
 - Provide staff to the Joint Information Center when requested.
 - Public Information Officers will distribute any disaster-related information to their partners, the public, and external audience when received.

7.1.4.3.3 Virginia Racing Commission

The Virginia Racing Commission is assigned the following duties:

- **ESF 5 Emergency Coordination, Information And Planning**
 - Appoint a VEST Liaison Officer and at least one alternate to serve as the primary point of contact for all disaster preparedness, response and recovery matters.
 - Appoint an Emergency Management Coordinator (EMC) and at least one alternate responsible for the development and maintenance of agency-specific emergency plans.
 - Appoint a public information officer to staff the VEST Joint Information Center at the request of VDEM and coordinate emergency public information with VDEM during states of emergency.

Support recovery operations as outlined in the COVEOP Statewide Recovery Support Annex.

- **ESF 15 External Affairs**
 - Coordinate emergency-related public information with the Joint Information Center using the Joint Information System.
 - Provide staff to the Joint Information Center when requested.
 - Public Information Officers will distribute any disaster-related information to their partners, the public, and external audience when received.